



OAKFIELD

Flat 24, 2, Martin Court Hastings, TN34 1DY

£1,275 Per Calendar Month



Flat 24, 2, Martin Court Hastings, TN34 1DY

*** BRAND NEW APARTMENTS AT
STATION PLAZA ***

This elegant second-floor two-bedroom apartment forms part of the striking new Station Plaza development, superbly located in the heart of Hastings. Just steps from Hastings Train Station and within easy walking distance of the seafront and Alexandra Park, it offers the very best of convenient coastal living.

The apartment is bright and well laid out, featuring a spacious open-plan living area with a contemporary fitted kitchen. Complete with fridge freezer, washer dryer, integrated dishwasher, oven and hob, it's designed with both style and practicality in mind. From the living space, double patio doors open out to a private balcony — the perfect place to enjoy a morning coffee or relax in the evening.

Two generously sized double bedrooms provide comfortable accommodation, while the bathroom is finished to a modern standard with a shower over the bath. The property also benefits from modern electric heating throughout and a secure entry intercom system.

Station Plaza offers residents the opportunity to enjoy a high-quality home in a superb central location, making this apartment an excellent choice for professionals, couples or small families seeking a stylish and well-connected base in Hastings.





Station Plaza has been designed with residents' lifestyles in mind. The development is pet-friendly and includes digital on-site parcel lockers to ensure deliveries are safe and convenient. Security and peace of mind are a priority with secure gated entry, and a private underground car park where each flat can benefit from an allocated space for just £25 per month, in addition to secure bike storage.

Residents will also enjoy access to a range of exclusive on-site amenities, including a 24/7 gym, a cinema room and a welcoming communal lounge that will help create a sense of community.

More information on Station Plaza and what this sought after new development offers can be found on their website <https://www.stationplazahastings.co.uk/>

Living Room / Kitchen

total floor area - 86'11" m sq (total floor area - 26.5 m sq)

Bedroom 1

total floor area - 42'3" m sq (total floor area - 12.9 m sq)

Bedroom 2

total floor area - 26'6" m sq (total floor area - 8.1 m sq)

Bathroom

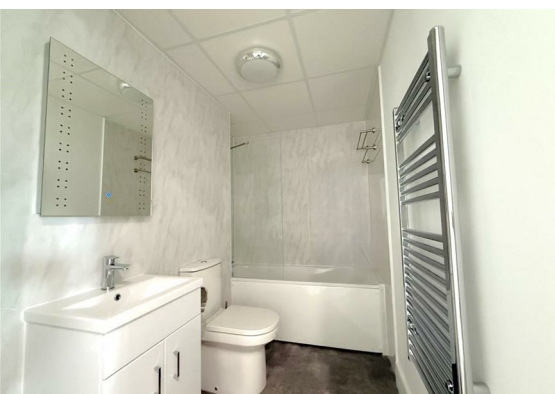
total floor area - 13'1" m sq (total floor area - 4.0 m sq)

Balcony

14'1" sq m (4.3 sq m)

Total floor area: 61.2 m sq

Council Tax Band to be confirmed



Floor Plan

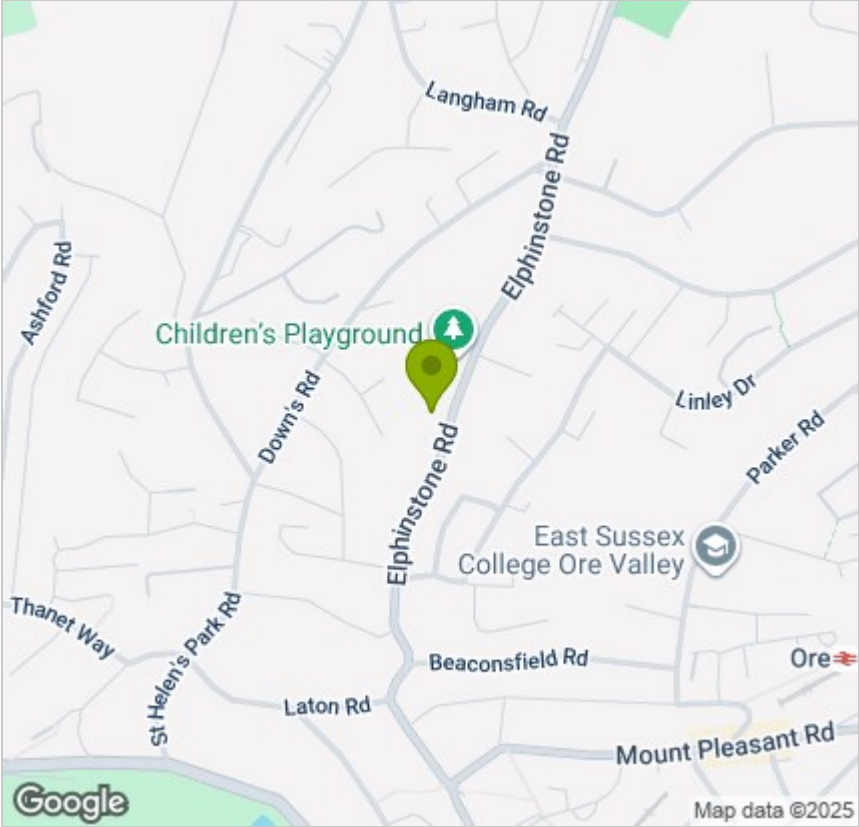


Viewing

Please contact us on 01424 446644 if you wish to arrange a viewing appointment for this property or require further information.

These particulars, whilst believed to be accurate are set out as a general outline only for guidance and do not constitute any part of an offer or contract. Intending purchasers should not rely on them as statements of representation of fact, but must satisfy themselves by inspection or otherwise as to their accuracy. No person in this firms employment has the authority to make or give any representation or warranty in respect of the property.

Area Map



Energy Efficiency Graph

